

**GROUP 43****INSTRUMENT CLUSTER AND ELECTRONIC
INSTRUMENTS****INDEX**

INSTRUMENT CLUSTER AND
ELECTRONIC INSTRUMENTS..... 43-2
- RULES AND PRECAUTIONS 43-2

- ELECTRONIC CLUSTER 43-3
- Services warning lights 43-4

For all the parts not mentioned here see the corresponding group
of manual "155 - INSTRUCTIONS FOR REPAIR" -
PA465500000000 - (Pages with publication no.
PA4655D1000000)



INSTRUMENT CLUSTER AND ELECTRONIC INSTRUMENTS

RULES AND PRECAUTIONS

**WARNING**

Before disconnecting and refitting components of the electric system, carefully read the following **RULES AND PRECAUTIONS**.

Before doing any work, make sure that the ignition key is in the "parking" position and that the battery earth cable is disconnected, and at all times:

- avoid connecting the output of control units directly to the load;
- absolutely avoid working directly on devices with cables connected to "positive" or earth without firstly disconnecting the control units;
- avoid short circuiting the sensors of the system unless otherwise specified;
- before doing any electric welding disconnect the control units to avoid damaging the electronic components due to induced currents.

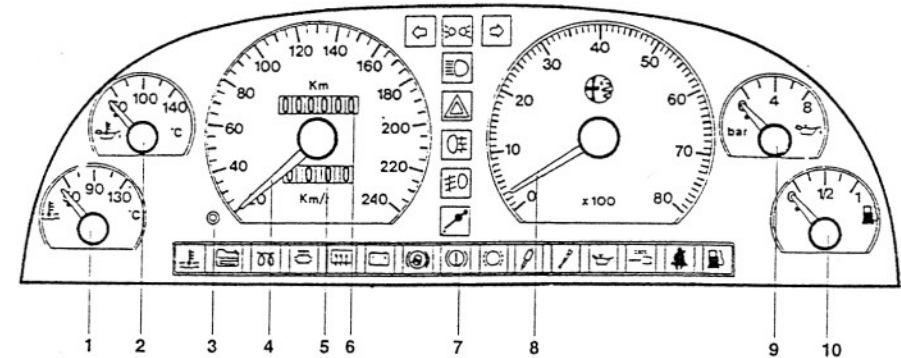
**CAUTIONS:**

Work on systems foreseeing the possible consequences and do not intervene when you are not perfectly familiar with the specifications of the components involved. When re-assembling and/or refitting reverse the sequence followed for dis-assembly and/or removal, unless otherwise specified, and restore the battery connection.

After replacing a component of the electric system, you are strongly recommended to replace the spare with Original Alfa Romeo Spare Parts. The failure to use original Alfa Romeo components, with even slightly different characteristics may adversely affect operating reliability and safety of the vehicle.



ELECTRONIC INSTRUMENT CLUSTER



1. Engine coolant temperature gauge
2. Engine oil temperature gauge
3. Trip meter reset
4. Speedometer
5. Trip meter

6. Mileage recorder
7. Services warning light (see details on following page)
8. Rev counter
9. Engine oil pressure
10. Fuel level gauge



SERVICES WARNING LIGHT



LH direction indicator



Sidelights and low beam lights



RH direction indicator



High beam lights



Hazard warning lights



Rear fog guards



Fog lamps



Low engine oil level



High engine coolant temperature



Water in fuel oil filter (N.C.)



Glow plugs (N.C.)

Catalytic silencer temperature
(only for certain Versions/Markets)

Heated rearscreen



Generator warning light



ABS wheel anti-lock system



Low brake fluid level/handbrake engaged



Worn brake pads

Electronically-controlled suspension
(N.C.)

Injection system



Low engine oil pressure



ALFA ROMEO CODE



Seat belts



Fuel reserve